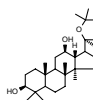
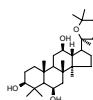


Panaxadiol



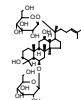
Catalog#: SL-00824
CAS: 19666-76-3
Mol Fmla: C₃₀H₅₂O₃
Unitsize

Panaxatriol



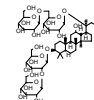
Catalog#: SL-00825
CAS: 32791-84-7
Mol Fmla: C₃₀H₅₂O₄
Unitsize

Ginsenoside Rgl



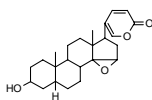
Catalog#: SL-00826
CAS: 22427-39-0
Mol Fmla: C₄₂H₇₂O₁₄
Unitsize

Ginsenoside Rbl



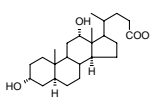
Catalog#: SL-00827
CAS: 41753-43-9
Mol Fmla: C₅₄H₉₂O₂₃
Unitsize

Resibufogenin



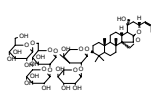
Catalog#: SL-00840
CAS: 465-39-4
Mol Fmla: C₂₄H₃₂O₄
Unitsize

Deoxycholic acid



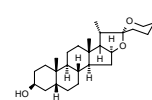
Catalog#: SL-00846
CAS: 83-44-3
Mol Fmla: C₂₄H₄₀O₄
Unitsize

Jujuboside A



Catalog#: SL-00856
CAS: 55466-04-1
Mol Fmla: C₅₈H₉₄O₂₆
Unitsize

Sarsasapogenin



Catalog#: SL-00863
CAS: 126-19-2
Mol Fmla: C₂₇H₄₄O₃
Unitsize

Notoginsenoside R1



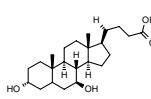
Catalog#: SL-00864
CAS: 80418-24-2
Mol Fmla: C₄₈H₈₄O₁₈
Unitsize

Ginsenoside Re



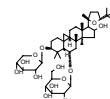
Catalog#: SL-00872
CAS: 51542-56-4
Mol Fmla: C₅₀H₈₈O₁₇
Unitsize

Ursodeoxycholic acid



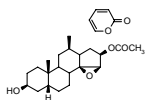
Catalog#: SL-00873
CAS: 128-13-2
Mol Fmla: C₂₃H₃₈O₄
Unitsize 10g
 50g

Astragaloside IV



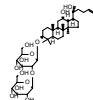
Catalog#: SL-00900
CAS: 84687-43-4
Mol Fmla: C₄₄H₇₅O₁₄
Unitsize

Cinobufagin



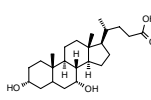
Catalog#: SL-00922
CAS: 470-37-1
Mol Fmla: C₂₅H₃₆O₄
Unitsize

Ginsenoside Rg3



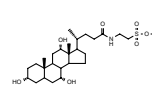
Catalog#: SL-00923
CAS: 14197-60-5
Mol Fmla: C₄₂H₇₂O₁₃
Unitsize

Chenodeoxycholic acid



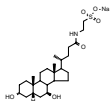
Catalog#: SL-00925
CAS: 474-25-9
Mol Fmla: C₂₄H₄₀O₄
Unitsize

Sodium Taurocholate



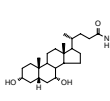
Catalog#: SL-00932
CAS: 145-42-6
Mol Fmla: C₂₆H₄₄NNaO₇S
Unitsize

Sodium Tauroursodeoxycholate



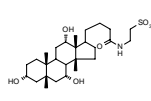
Catalog#: SL-00933
CAS: 1180-95-6
Mol Fmla: C₂₆H₄₄NNaO₆S
Unitsize

Sodium taurochenodeoxycholic acid



Catalog#: SL-00957
CAS: 6009-98-9
Mol Fmla: C₂₆H₄₄NNaO₆S
Unitsize

Taurine



Catalog#: SL-01074
CAS: 107-35-7
Mol Fmla: C₂₈H₄₉NO₄
Unitsize