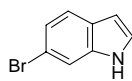
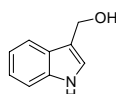


6-Bromoindole



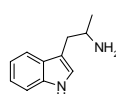
Catalog#: SL-00043
CAS: 52415-29-9
Mol Fmla: C_8H_6BrN
Unitsize 1g, 5g, 10g

Indole-3-carbinol



Catalog#: SL-00368
CAS: 700-06-1
Mol Fmla: C_9H_9NO
Unitsize

DL-alfa-methyltryptamine



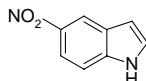
Catalog#: SL-00378
CAS: 299-26-3
Mol Fmla: $C_{11}H_{14}N_2$
Unitsize Bulk

4-Indole-carboxylic acid methyl ester



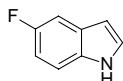
Catalog#: SL-00410
CAS: 39830-66-5
Mol Fmla: $C_{10}H_9NO_2$
Unitsize 1g, 5g

5-Nitroindole



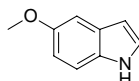
Catalog#: SL-00461
CAS: 6146-52-7
Mol Fmla: $C_8H_6N_2O_2$
Unitsize bulk

5-Fluoro indole



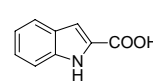
Catalog#: SL-00462
CAS: 399-52-0
Mol Fmla: C_8H_6FN
Unitsize bulk

5-Methoxy indole



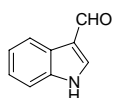
Catalog#: SL-00469
CAS: 1006-94-6
Mol Fmla: C_9H_9NO
Unitsize 1g, 5g

Indole-2-carboxylic acid



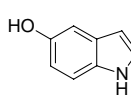
Catalog#: SL-00477
CAS: 1477-50-5
Mol Fmla: $C_9H_7NO_2$
Unitsize

Indole-3-carboxaldehyde



Catalog#: SL-00478
CAS: 487-89-8
Mol Fmla: C_9H_7NO
Unitsize

5-Hydroxyindole



Catalog#: SL-00513
CAS: 1953-54-4
Mol Fmla: C_8H_7NO
Unitsize

4-Hydroxyindole



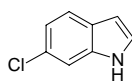
Catalog#: SL-00534
CAS: 2380-94-1
Mol Fmla: C_8H_7NO
Unitsize

4-Indole-carboxaldehyde



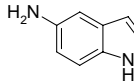
Catalog#: SL-00776
CAS: 1074-86-8
Mol Fmla: C_9H_7NO
Unitsize Bulk

6-Chloroindole



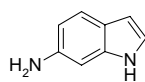
Catalog#: SL-01943
CAS: 17422-33-2
Mol Fmla: C_8H_6ClN
Unitsize 5g Bulk

5-Aminoindole



Catalog#: SL-02062
CAS: 5192-03-0
Mol Fmla: $C_8H_8N_2$
Unitsize Bulk

6-Aminoindole



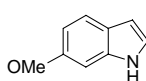
Catalog#: SL-02064
CAS: 5318-27-4
Mol Fmla: $C_8H_8N_2$
Unitsize Bulk

4-Aminoindole



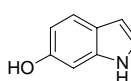
Catalog#: SL-02065
CAS: 5192-23-4
Mol Fmla: $C_8H_8N_2$
Unitsize 1g 5g

6-Methoxyindole



Catalog#: SL-02072
CAS: 3189-13-7
Mol Fmla: C_9H_9NO
Unitsize 5g

6-Hydroxyindole



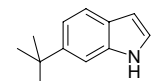
Catalog#: SL-02118
CAS: 2380-86-1
Mol Fmla: C_8H_7NO
Unitsize 1g 5g

7-Hydroxyindole



Catalog#: SL-02119
CAS: 2380-84-9
Mol Fmla: C_8H_7NO
Unitsize 1g 5g

6-tert-Butylindole



Catalog#: SL-02143
CAS: 887581-54-6
Mol Fmla: $C_{12}H_{15}N$
Unitsize 0.1g, 1g, 10g

4-Methoxyindole



Catalog#: SL-02155
CAS: 4837-90-5
Mol Fmla: C_9H_9NO
Unitsize 1g 5g

7-Indolecarboxylic acid methyl ester



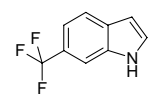
Catalog#: SL-02169
CAS: 93247-78-0
Mol Fmla: $C_{10}H_9NO_2$
Unitsize 1g 5g

4-Bromoindole



Catalog#: SL-02674
CAS: 10075-50-0
Mol Fmla: C_8H_6BrN
Unitsize 0.1g, 1g, 10g

6-(Trifluoromethyl)indole



Catalog#: SL-02677
CAS: 13544-43-9
Mol Fmla: $C_9H_6F_3N$
Unitsize 1g 5g

7-methylindole



Catalog#: SL-02781
CAS: 933-67-5
Mol Fmla: C_9H_9N
Unitsize 1g 5g

7-Chloro indole



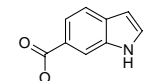
Catalog#: SL-02783
CAS: 53924-05-3
Mol Fmla: C_8H_6ClN
Unitsize 1g 5g

7-Indolecarboxylic acid



Catalog#: SL-02972
CAS: 1670-83-3
Mol Fmla: $C_9H_7NO_2$
Unitsize 1g 5g

Methyl indole-6-carboxylate



Catalog#: SL-02976
CAS: 50820-65-0
Mol Fmla: $C_{10}H_9NO_2$
Unitsize 5g Bulk

4-Chloroindole



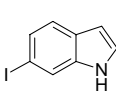
Catalog#: SL-02984
CAS: 25235-85-2
Mol Fmla: C_8H_6ClN
Unitsize 1g 5g

4-Fluoroindole



Catalog#: SL-02985
CAS: 387-43-9
Mol Fmla: C_8H_6FN
Unitsize 1g 5g

6-Iodoindole



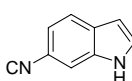
Catalog#: SL-03128
CAS: 115666-47-2
Mol Fmla: C_8H_6IN
Unitsize 0.25g 5g

7-Cyano indole



Catalog#: SL-03176
CAS: 96631-87-7
Mol Fmla: $C_8H_6N_2$
Unitsize 1g 5g

6-Cyanoindole



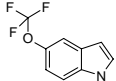
Catalog#: SL-03485
CAS: 15861-36-6
Mol Fmla: $C_8H_6N_2$
Unitsize 1g 5g

4-Iodo indole



Catalog#: SL-03530
CAS: 81038-38-2
Mol Fmla: C_8H_6IN
Unitsize 1g 5g

5-Trifluoromethoxy-1H-indole



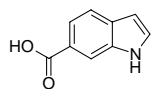
Catalog#: SL-03709
CAS: 262593-63-5
Mol Fmla: $C_9H_6F_3NO$
Unitsize 1g 10g

4-Nitroindole



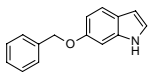
Catalog#: SL-03784
CAS: 4769-97-5
Mol Fmla: $C_8H_6N_2O_2$
Unitsize 100g, bulk

6-indolecarboxylic acid



Catalog#: SL-03877
CAS: 1670-82-2
Mol Fmla: $C_9H_7NO_2$
Unitsize 1g, 100g

6-Benzloxy-indole



Catalog#: SL-03992
CAS: 15903-94-3
Mol Fmla: $C_{15}H_{13}NO$
Unitsize 1g, 5g

7-Ethylindole



Catalog#: SL-04088
CAS: 22867-74-9
Mol Fmla: $C_{10}H_{11}N$
Unitsize 1g, 5g