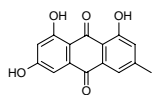
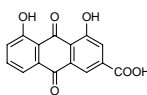


### Emodin



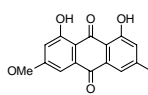
**Catalog#:** SL-00876  
**CAS:** 518-82-1  
**Mol Fmla:** C<sub>15</sub>H<sub>10</sub>O<sub>5</sub>  
**Unitsize** 10g, 100g, bulk

### Rhein



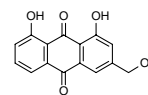
**Catalog#:** SL-00877  
**CAS:** 478-43-3  
**Mol Fmla:** C<sub>15</sub>H<sub>8</sub>O<sub>6</sub>  
**Unitsize**

### Physcion



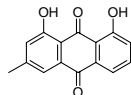
**Catalog#:** SL-00878  
**CAS:** 521-61-9  
**Mol Fmla:** C<sub>16</sub>H<sub>12</sub>O<sub>5</sub>  
**Unitsize**

### Aloe-emodin



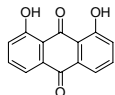
**Catalog#:** SL-00914  
**CAS:** 481-72-1  
**Mol Fmla:** C<sub>15</sub>H<sub>10</sub>O<sub>5</sub>  
**Unitsize**

### Chrysophanol



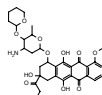
**Catalog#:** SL-00915  
**CAS:** 481-74-3  
**Mol Fmla:** C<sub>15</sub>H<sub>10</sub>O<sub>4</sub>  
**Unitsize**

### 1, 9-Dihydroxyanthraquinone



**Catalog#:** SL-00942  
**CAS:** 117-10-2  
**Mol Fmla:** C<sub>14</sub>H<sub>8</sub>O<sub>4</sub>  
**Unitsize**

### Pirarubicin



**Catalog#:** SL-02582  
**CAS:** 72496-41-4  
**Mol Fmla:** C<sub>32</sub>H<sub>37</sub>NO<sub>12</sub>  
**Unitsize**