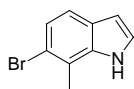
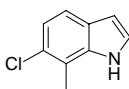


6-Bromo-7-methylindole



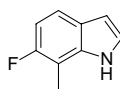
Catalog#: SL-02773
CAS: 1000343-89-4
Mol Fmla: C_9H_8BrN
Unitsize 0.1g, 1g, 10g

6-Chloro-7-methylindole



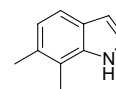
Catalog#: SL-02779
CAS: 57817-09-1
Mol Fmla: C_9H_8ClN
Unitsize 1g
5a

6-Fluoro-7-methylindole



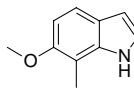
Catalog#: SL-02780
CAS: 57817-10-4
Mol Fmla: C_9H_8FN
Unitsize 1g
5a

6,7-Dimethylindole



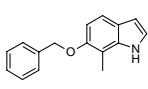
Catalog#: SL-02784
CAS: 55199-24-1
Mol Fmla: $C_{10}H_{11}N$
Unitsize 1g
5a

6-Methoxy-7-methylindole



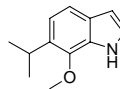
Catalog#: SL-02786
CAS: 19500-05-1
Mol Fmla: $C_{10}H_{11}NO$
Unitsize 0.1g, 1g, 10g

6-Benzoyloxy-7-methylindole



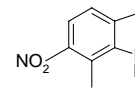
Catalog#: SL-02788
CAS: N/A
Mol Fmla: $C_{16}H_{15}NO$
Unitsize 1g
5a

7-Methoxy-6-isopropylindole



Catalog#: SL-04072
CAS: N/A
Mol Fmla: $C_{12}H_{15}NO$
Unitsize 1g, 5g

7-Methyl-6-nitro 1H-indole



Catalog#: SL-04275
CAS: 133053-70-0
Mol Fmla: $C_9H_8N_2O_2$
Unitsize 1g
5a