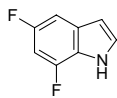
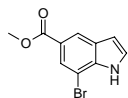


## 5,7-Difluoroindole



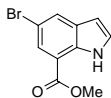
Catalog#: SL-01873  
CAS: 301856-25-7  
Mol Fmla:  $C_8H_5F_2N$   
Unitsize 1g, 5g

## 7-Bromo indole-5-carboxylic acid methyl ester



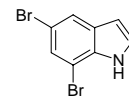
Catalog#: SL-01828  
CAS: 885523-35-3  
Mol Fmla:  $C_{10}H_8BrNO_2$   
Unitsize 0.1g, 1g, 5g

## 5-Bromo indole-7-carboxylic acid methyl ester



Catalog#: SL-01829  
CAS: 860624-89-1  
Mol Fmla:  $C_{10}H_8BrNO_2$   
Unitsize 0.1g, 1g, 5g, Bulk

## 5,7-Dibromo indole



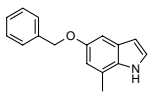
Catalog#: SL-01830  
CAS: 36132-08-8  
Mol Fmla:  $C_8H_5Br_2N$   
Unitsize 0.1g, 1g, 5g

## 5-Methoxy-7-methylindole



Catalog#: SL-02782  
CAS: 61019-05-4  
Mol Fmla:  $C_{10}H_{11}NO$   
Unitsize 1g  
5a

## 5-Benzyloxy-7-methylindole



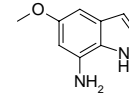
Catalog#: SL-02787  
CAS: 4792-65-8  
Mol Fmla:  $C_{16}H_{15}NO$   
Unitsize 1g  
5a

## 5-Methoxy-7-nitroindole



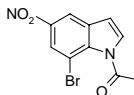
Catalog#: SL-02907  
CAS: 10553-10-3  
Mol Fmla:  $C_9H_8N_2O_3$   
Unitsize 1g  
5a

## 7-Amino-5-methoxyindole



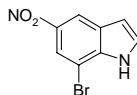
Catalog#: SL-02909  
CAS: 13838-47-6  
Mol Fmla:  $C_9H_{10}N_2O$   
Unitsize 1g  
5a

## 1-Acetyl-7-bromo-5-nitroindole



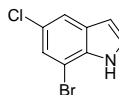
Catalog#: SL-03140  
CAS: 1000343-23-6  
Mol Fmla:  $C_{10}H_7BrN_2O_3$   
Unitsize 1g  
5a

## 7-Bromo-5-nitroindole



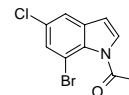
Catalog#: SL-03143  
CAS: 87240-07-1  
Mol Fmla:  $C_8H_5BrN_2O_2$   
Unitsize 1g  
5a

## 7-Bromo-5-chloroindole



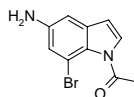
Catalog#: SL-03144  
CAS: 292636-08-9  
Mol Fmla:  $C_8H_5BrClN$   
Unitsize 1g  
5a

## 1-Acetyl-7-bromo-5-chloroindole



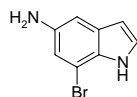
Catalog#: SL-03145  
CAS: 1000343-26-9  
Mol Fmla:  $C_{10}H_7BrClNO$   
Unitsize 1g  
5a

## 1-Acetyl-5-amino-7-bromoindole



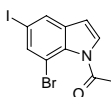
Catalog#: SL-03147  
CAS: 1000343-32-7  
Mol Fmla:  $C_{10}H_9BrN_2O$   
Unitsize 1g  
5a

## 5-Amino-7-bromoindole



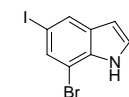
Catalog#: SL-03150  
CAS: 196205-07-9  
Mol Fmla:  $C_8H_7BrN_2$   
Unitsize 1g  
5a

## 1-Acetyl-7-bromo-5-iodoindole



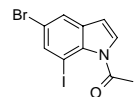
Catalog#: SL-03151  
CAS: 1000343-35-0  
Mol Fmla:  $C_{10}H_7BrINO$   
Unitsize 1g  
5a

## 7-Bromo-5-iodoindole



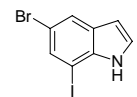
Catalog#: SL-03152  
CAS: 1000343-38-3  
Mol Fmla:  $C_8H_5BrIN$   
Unitsize 1g  
5a

## 1-Acetyl-5-bromo-7-iodoindole



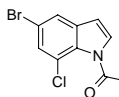
Catalog#: SL-03154  
CAS: 1000343-41-8  
Mol Fmla:  $C_{10}H_7BrINO$   
Unitsize 1g  
5a

## 5-Bromo-7-iodoindole



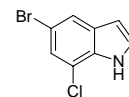
Catalog#: SL-03155  
CAS: 123020-20-2  
Mol Fmla:  $C_8H_5BrIN$   
Unitsize 1g  
5a

## 1-Acetyl-5-bromo-7-chloroindole



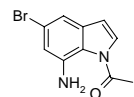
Catalog#: SL-03157  
CAS: 1000343-44-1  
Mol Fmla:  $C_{10}H_7BrClNO$   
Unitsize 1g  
5a

## 5-Bromo-7-chloroindole



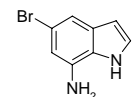
Catalog#: SL-03158  
CAS: 180623-89-6  
Mol Fmla:  $C_8H_5BrClN$   
Unitsize 1g  
5a

## 1-Acetyl-7-amino-5-bromoindole



Catalog#: SL-03161  
CAS: 1000343-47-4  
Mol Fmla:  $C_{10}H_9BrN_2O$   
Unitsize 1g  
5a

## 7-Amino-5-bromoindole



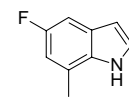
Catalog#: SL-03162  
CAS: 374537-99-2  
Mol Fmla:  $C_8H_7BrN_2$   
Unitsize 1g  
5a

## 5,7-Dimethoxy indole



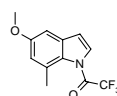
Catalog#: SL-03490  
CAS: 27508-85-6  
Mol Fmla:  $C_{10}H_{11}NO_2$   
Unitsize 1g  
5a

## 5-Fluoro-7-methyl indole



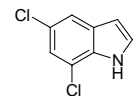
Catalog#: SL-03491  
CAS: N/A  
Mol Fmla:  $C_9H_8FN$   
Unitsize 1g  
5a

## 1-Trifluoroacetyl-5-methoxy-7-methyl indole



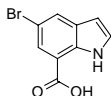
Catalog#: SL-03503  
CAS: N/A  
Mol Fmla:  $C_{12}H_{13}NO_2$   
Unitsize 1g  
5a

## 5,7-Dichloroindole



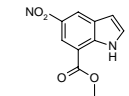
Catalog#: SL-03699  
CAS: 4792-72-7  
Mol Fmla:  $C_8H_5Cl_2N$   
Unitsize 1g  
10a

## 5-Bromo indole-7-carboxylic acid



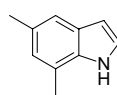
Catalog#: SL-03771  
CAS: 860624-90-4  
Mol Fmla:  $C_9H_6BrNO_2$   
Unitsize 1g, 25g, bulk

## 5-Nitro-indole-7-carboxylic acid methyl ester



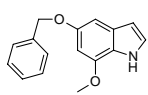
Catalog#: SL-03795  
CAS: N/A  
Mol Fmla:  $C_{10}H_8N_2O_4$   
Unitsize 0.1g  
1a

## 5,7-Dimethylindole



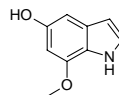
Catalog#: SL-03816  
CAS: 54020-53-0  
Mol Fmla:  $C_{10}H_{11}N$   
Unitsize 1g, 5g, 10g

## 5-Benzyloxy-7-methoxy indole



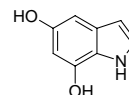
Catalog#: SL-03904  
CAS: N/A  
Mol Fmla:  $C_{16}H_{15}NO_2$   
Unitsize 1g  
10a

## 5-Hydroxy-7-methoxy indole



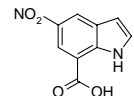
Catalog#: SL-03905  
CAS: N/A  
Mol Fmla:  $C_9H_9NO_2$   
Unitsize 1g  
10a

## 5,7-Dihydroxy indole



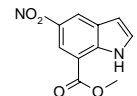
Catalog#: SL-03906  
CAS: 191331-69-8  
Mol Fmla:  $C_8H_7NO_2$   
Unitsize 1g  
10a

## 5-Nitro-7-indole carboxylic acid



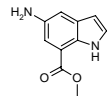
Catalog#: SL-03922  
CAS: N/A  
Mol Fmla:  $C_9H_6N_2O_4$   
Unitsize 1g, 5g

## 5-Nitro-7-indole carboxylic acid methyl ester



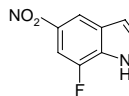
Catalog#: SL-03928  
CAS: 1082040-74-1  
Mol Fmla:  $C_{10}H_8N_2O_4$   
Unitsize 1g, 5g

## 5-Amino-indole-7-carboxylic acid methyl ester



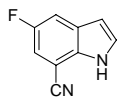
Catalog#: SL-03952  
CAS: N/A  
Mol Fmla:  $C_{10}H_{10}N_2O_2$   
Unitsize 1g, 10g

## 7-Fluoro-5-nitro-1H-indole



Catalog#: SL-04201  
CAS: N/A  
Mol Fmla:  $C_8H_5FN_2O_2$   
Unitsize 1g  
5a

5-Fluoro-indole-7-carbonitrile



Catalog#: SL-04217

CAS: 883500-80-9

Mol Fmla: C<sub>9</sub>H<sub>5</sub>FN<sub>2</sub>

Unitsize 1g, 5g