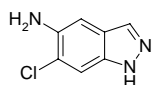
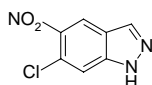


5-Amino-6-chloro (1H)indazole



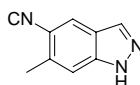
Catalog#: SL-02621
CAS: 221681-75-0
Mol Fmla: $C_7H_6ClN_3$
Unit size 0.1g, 1g, 10g

6-Chloro-5-nitro-1H-indazole



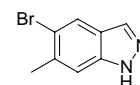
Catalog#: SL-02622
CAS: 101420-98-8
Mol Fmla: $C_7H_4ClN_3O_2$
Unit size 0.1g, 1g, 10g

5-Cyano-6-methyl (1H)indazole



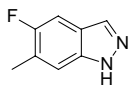
Catalog#: SL-02736
CAS: 259537-71-8
Mol Fmla: $C_9H_7N_3$
Unit size 0.1g, 1g, 10g

5-Bromo-6-methyl (1H)indazole



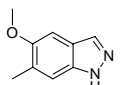
Catalog#: SL-02737
CAS: 885223-72-3
Mol Fmla: $C_9H_7BrN_2$
Unit size 1g
5a

5-Floro-6-methyl (1H)indazole



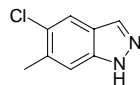
Catalog#: SL-02738
CAS: 210581-39-8
Mol Fmla: $C_8H_7FN_2$
Unit size 0.1g, 1g, 10g

5-Methoxy-6-methyl (1H)indazole



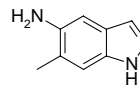
Catalog#: SL-02739
CAS: 1000343-61-2
Mol Fmla: $C_9H_{10}N_2O$
Unit size 0.1g, 1g, 10g

5-Chloro-6-methyl (1H)indazole



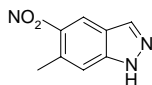
Catalog#: SL-02740
CAS: 1000343-64-5
Mol Fmla: $C_8H_7ClN_2$
Unit size 0.1g, 1g, 10g

5-Amino-6-methyl (1H)indazole



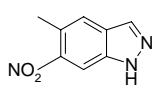
Catalog#: SL-02741
CAS: 8115-45-9
Mol Fmla: $C_8H_9N_3$
Unit size 0.1g, 1g, 10g

5-Nitro-6-methyl (1H)indazole



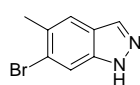
Catalog#: SL-02742
CAS: 81115-43-7
Mol Fmla: $C_8H_7N_3O_2$
Unit size 1g
10a

6-Nitro-5-methyl (1H)indazole



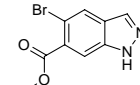
Catalog#: SL-02744
CAS: 72521-00-7
Mol Fmla: $C_8H_7N_3O_2$
Unit size 1g
25a

6-Bromo-5-methyl (1H)indazole



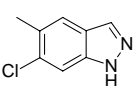
Catalog#: SL-02745
CAS: 1000343-69-0
Mol Fmla: $C_8H_7BrN_2$
Unit size 1g
25a

5-Bromo-methyl [1H]indazole-6-carboxylate



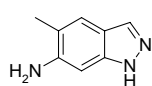
Catalog#: SL-02977
CAS: 1000342-30-2
Mol Fmla: $C_9H_7BrN_2O_2$
Unit size 1g
5a

6-Chloro-5-methyl-1H-indazole



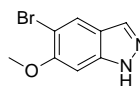
Catalog#: SL-03314
CAS: 1000341-02-5
Mol Fmla: $C_8H_7ClN_2$
Unit size 0.1g, 1g, 10g

6-Amino-5-methyl 1H-indazole



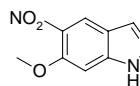
Catalog#: SL-03319
CAS: 75844-28-9
Mol Fmla: $C_8H_9N_3$
Unit size 1g
5a

5-Bromo-6-methoxy (1H)indazole



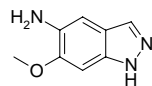
Catalog#: SL-03509
CAS: 152626-78-3
Mol Fmla: $C_8H_7BrN_2O$
Unit size 1g
5a

6-Methoxy-5-nitro (1H)indazole



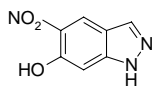
Catalog#: SL-03510
CAS: 152626-75-0
Mol Fmla: $C_8H_7N_3O_3$
Unit size 1g
5a

5-Amino-6-methoxy (1H)indazole



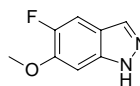
Catalog#: SL-03511
CAS: 749223-61-8
Mol Fmla: $C_8H_9N_3O$
Unit size 1g
5a

6-Hydroxy-5-nitro (1H)indazole



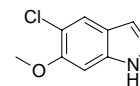
Catalog#: SL-03512
CAS: N/A
Mol Fmla: $C_7H_5N_3O_3$
Unit size 1g
5a

5-Fluoro-6-methoxy (1H)indazole



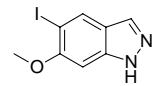
Catalog#: SL-03513
CAS: N/A
Mol Fmla: $C_8H_7FN_2O$
Unit size 1g
5a

5-Chloro-6-methoxy (1H)indazole



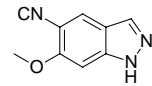
Catalog#: SL-03514
CAS: N/A
Mol Fmla: $C_8H_7ClN_2O$
Unit size 1g
5a

5-Iodo-6-methoxy (1H)indazole



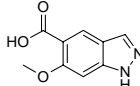
Catalog#: SL-03515
CAS: N/A
Mol Fmla: $C_8H_7IN_2O$
Unit size 1g
5a

5-Cyano-6-methoxy (1H)indazole



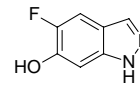
Catalog#: SL-03516
CAS: 473417-50-4
Mol Fmla: $C_9H_7N_3O$
Unit size 1g
5a

6-Hydroxy (1H)indazole-5-carboxylic acid



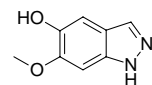
Catalog#: SL-03517
CAS: N/A
Mol Fmla: $C_8H_8N_2O_3$
Unit size 1g
5a

5-Fluoro-6-hydroxy (1H)indazole



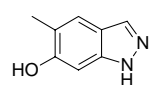
Catalog#: SL-03518
CAS: N/A
Mol Fmla: $C_7H_5FN_2O$
Unit size 1g
5a

5-Hydroxy-6-methoxy (1H)indazole



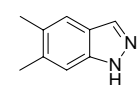
Catalog#: SL-03519
CAS: 92224-23-2
Mol Fmla: $C_8H_8N_2O_2$
Unit size 1g
5a

5-Methyl-6-hydroxy-(1H)indazole



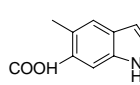
Catalog#: SL-03645
CAS: N/A
Mol Fmla: $C_8H_8N_2O$
Unit size 1g
5a

5,6-Dimethyl-1(H)indazole



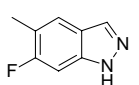
Catalog#: SL-03646
CAS: 700-99-2
Mol Fmla: $C_9H_{10}N_2$
Unit size 1g
5a

5-Methyl-(1H)indazole-3-carboxylic acid



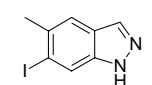
Catalog#: SL-03647
CAS: N/A
Mol Fmla: $C_9H_8N_2O_2$
Unit size 1g
5a

5-Methyl-6-fluoro-(1H)indazole



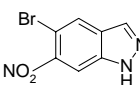
Catalog#: SL-03648
CAS: N/A
Mol Fmla: $C_8H_7FN_2$
Unit size 1g
5a

5-Methyl-6-iodo-(1H)indazole



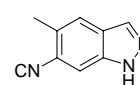
Catalog#: SL-03649
CAS: N/A
Mol Fmla: $C_8H_7IN_2$
Unit size 1g
5a

5-Bromo-6-nitro (1H)indazole



Catalog#: SL-03736
CAS: 71785-49-4
Mol Fmla: $C_7H_4BrN_3O_2$
Unit size 0.25g
1a

6-Cyano-5-methyl 1H-indazole



Catalog#: SL-04305
CAS: N/A
Mol Fmla: $C_9H_7N_3$
Unit size 1g
5a