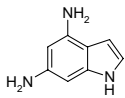
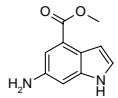


4,6-Diaminoindole



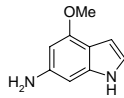
Catalog#: SL-00017
CAS: 885518-11-6
Mol Fmla: $C_8H_9N_3$
Unit size 100mg, 250mg

6-Amino-1H-indole-4-carboxylic acid methyl ester



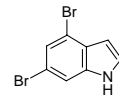
Catalog#: SL-00018
CAS: 103956-00-9
Mol Fmla: $C_{10}H_{10}N_2O_2$
Unit size 1g, 5g, 100g

4-Methoxy-6-amino indole



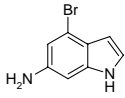
Catalog#: SL-00026
CAS: 885518-12-7
Mol Fmla: $C_9H_{10}N_2O$
Unit size 1g, 5g

4,6-Dibromo indole



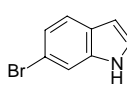
Catalog#: SL-00034
CAS: 99910-50-6
Mol Fmla: $C_8H_5Br_2N$
Unit size 1g, 10g, 50g

4-Bromo-6-aminoindole



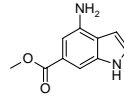
Catalog#: SL-00039
CAS: 375369-03-2
Mol Fmla: $C_8H_7BrN_2$
Unit size 1g, 5g

6-Bromoindole



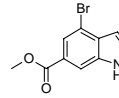
Catalog#: SL-00043
CAS: 52415-29-9
Mol Fmla: C_8H_6BrN
Unit size 1g, 5g, 10g

4-Amino-6-indole carboxylic acid methyl ester



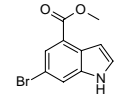
Catalog#: SL-00083
CAS: 121561-15-7
Mol Fmla: $C_{10}H_{10}N_2O_2$
Unit size 1g, 10g, 100g, Bulk

4-Bromo-6-indolecarboxylic acid methyl ester



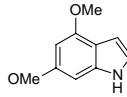
Catalog#: SL-00088
CAS: 882679-96-1
Mol Fmla: $C_{10}H_8BrNO_2$
Unit size 100mg, 1g, 5g, 50g, Bulk

6-Bromo-4-indolecarboxylic acid methyl ester



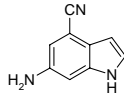
Catalog#: SL-00089
CAS: 107650-22-6
Mol Fmla: $C_{10}H_8BrNO_2$
Unit size 100mg, 1g, 5g, 50g, Bulk

4,6-Dimethoxyindole



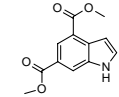
Catalog#: SL-00131
CAS: 23659-87-2
Mol Fmla: $C_{10}H_{11}NO_2$
Unit size 250mg, 1g, 5g

6-Amino-4-cyanoindole



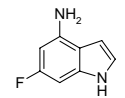
Catalog#: SL-00135
CAS: 885518-24-1
Mol Fmla: $C_9H_7N_3$
Unit size 1g, 5g

4,6-Indole dicarboxylic acid methyl ester



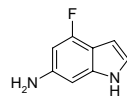
Catalog#: SL-00136
CAS: 86012-83-1
Mol Fmla: $C_{12}H_{11}NO_4$
Unit size 1g, 5g

4-Amino-6-fluoroindole



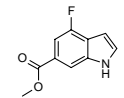
Catalog#: SL-00137
CAS: 885518-25-2
Mol Fmla: $C_8H_7FN_2$
Unit size 1g, 5g

6-Amino-4-fluoroindole



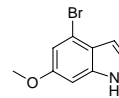
Catalog#: SL-00138
CAS: 885518-26-3
Mol Fmla: $C_8H_7FN_2$
Unit size 1g, 5g

4-Fluoro-6-indole carboxylic acid methyl ester



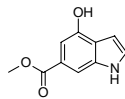
Catalog#: SL-00139
CAS: 885518-27-4
Mol Fmla: $C_{10}H_8FNO_2$
Unit size 1g, 5g

4-Bromo-6-methoxyindole



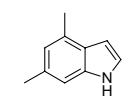
Catalog#: SL-00143
CAS: 393553-55-4
Mol Fmla: C_9H_8BrNO
Unit size 1g, 5g

4-Hydroxy-6-indole carboxylic acid methyl ester



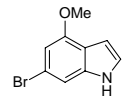
Catalog#: SL-00144
CAS: 77140-48-8
Mol Fmla: $C_{10}H_9NO_3$
Unit size 1g, 5g

4,6-Dimethylindole



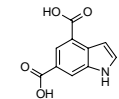
Catalog#: SL-00155
CAS: 75948-77-5
Mol Fmla: $C_{10}H_{11}N$
Unit size 1g, 5g, 100g

6-Bromo-4-methoxy indole



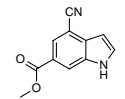
Catalog#: SL-00156
CAS: 393553-57-6
Mol Fmla: C_9H_8BrNO
Unit size 1g, 5g, 50g

4,6-Indole dicarboxylic acid



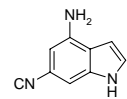
Catalog#: SL-00157
CAS: 885518-34-3
Mol Fmla: $C_{10}H_7NO_4$
Unit size 1g, 5g

4-Cyano-6-methylcarboxylateindole



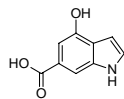
Catalog#: SL-00182
CAS: 885518-38-7
Mol Fmla: $C_{11}H_8N_2O_2$
Unit size 1g, 5g

4-Amino-6-cyanoindole



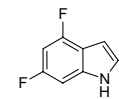
Catalog#: SL-00183
CAS: 885518-39-8
Mol Fmla: $C_9H_7N_3$
Unit size 1g, 5g

4-Hydroxyindole-6-carboxylic acid



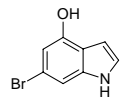
Catalog#: SL-00191
CAS: 40990-52-1
Mol Fmla: $C_9H_7NO_3$
Unit size 0.1g, 1g, 5g

4,6-Difluoroindole



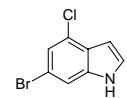
Catalog#: SL-00201
CAS: 199526-97-1
Mol Fmla: $C_8H_5F_2N$
Unit size 1g, 5g

6-Bromo-4-hydroxyindole



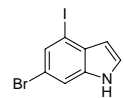
Catalog#: SL-00268
CAS: 885518-89-8
Mol Fmla: C_8H_6BrNO
Unit size 1g, 5g

6-Bromo-4-chloro-1H-indole



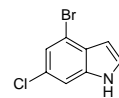
Catalog#: SL-00276
CAS: 885519-01-7
Mol Fmla: C_8H_5BrClN
Unit size 1g, 5g

6-Bromo-4-iodoindole



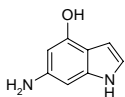
Catalog#: SL-00291
CAS: 885519-17-5
Mol Fmla: C_8H_5BrIN
Unit size 0.1g, 1g, 5g

4-Bromo-6-chloroindole



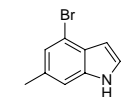
Catalog#: SL-00297
CAS: 885519-23-3
Mol Fmla: C_8H_5BrClN
Unit size 1g, 5g

6-Amino-4-hydroxy indole



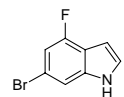
Catalog#: SL-01262
CAS: 885520-39-8
Mol Fmla: $C_8H_8N_2O$
Unit size 1g, 5g

4-Bromo-6-methyl indole



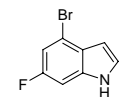
Catalog#: SL-01271
CAS: 885520-48-9
Mol Fmla: C_9H_8BrN
Unit size 1g, 5g

6-Bromo-4-fluoro indole



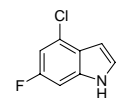
Catalog#: SL-01275
CAS: 885520-59-2
Mol Fmla: C_8H_5BrFN
Unit size 1g, 5g

4-Bromo-6-fluoroindole



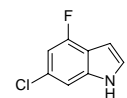
Catalog#: SL-01279
CAS: 885520-70-7
Mol Fmla: C_8H_5BrFN
Unit size 1g, 5g

4-Chloro-6-fluoro indole



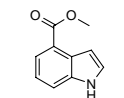
Catalog#: SL-01283
CAS: 885520-79-6
Mol Fmla: C_8H_5ClFN
Unit size 1g, 5g

6-Chloro-4-fluoro indole



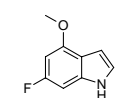
Catalog#: SL-01286
CAS: 885520-88-7
Mol Fmla: C_8H_5ClFN
Unit size 1g, 5g

4-Indole-carboxylic acid methyl ester



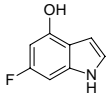
Catalog#: SL-00410
CAS: 39830-66-5
Mol Fmla: $C_{10}H_9NO_2$
Unit size 1g, 5g

6-Fluoro-4-methoxy indole



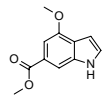
Catalog#: SL-01291
CAS: N/A
Mol Fmla: C_9H_8FNO
Unit size 1g, 5g

6-Fluoro-4-hydroxy indole



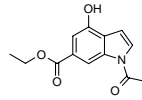
Catalog#: SL-01292
CAS: 885521-04-0
Mol Fmla: C_8H_6FNO
Unit size 1g, 5g

4-Methoxy-6-indole carboxylic acid methyl ester



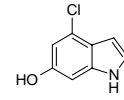
Catalog#: SL-01296
CAS: 41082-79-5
Mol Fmla: $C_{11}H_{11}NO_3$
Unit size 1g, 5g

1-Acetyl-4-hydroxy-6-indole carboxylic acid ethyl ester



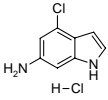
Catalog#: SL-01402
CAS: N/A
Mol Fmla: $C_{13}H_{13}NO_4$
Unit size 0.1g, 1g, 10g

4-Chloro-6-hydroxy indole



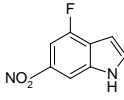
Catalog#: SL-01484
CAS: 885520-20-7
Mol Fmla: C_8H_6ClNO
Unit size 1g, 5g

6-Amino-4-chloroindole hydrochloride



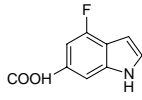
Catalog#: SL-01485
CAS: 1134724-15-4
Mol Fmla: $C_8H_6Cl_2N_2$
Unit size 1g, 5g, 50g

4-Fluoro-6-nitro indole



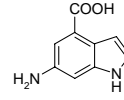
Catalog#: SL-01487
CAS: 885520-28-5
Mol Fmla: $C_8H_5FN_2O_2$
Unit size 1g, 5g

4-Fluoro-6-indole carboxylic acid



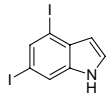
Catalog#: SL-01488
CAS: 885520-31-0
Mol Fmla: $C_9H_6FNO_2$
Unit size 1g, 5g

6-Amino-4-indolecarboxylic acid



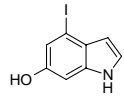
Catalog#: SL-01489
CAS: 885520-34-3
Mol Fmla: $C_9H_8N_2O_2$
Unit size 0.1g, 1g, 10g

4,6-Diiodo indole



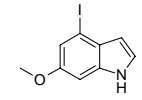
Catalog#: SL-01490
CAS: 885520-37-6
Mol Fmla: $C_8H_5I_2N$
Unit size 1g, 5g

6-Hydroxy-4-iodo indole



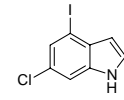
Catalog#: SL-01491
CAS: 885520-40-1
Mol Fmla: C_8H_6INO
Unit size 1g, 5g

4-Iodo-6-methoxy indole



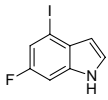
Catalog#: SL-01492
CAS: 885520-43-4
Mol Fmla: C_9H_8INO
Unit size 1g, 5g

6-Chloro-4-iodo indole



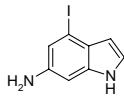
Catalog#: SL-01493
CAS: 885520-46-7
Mol Fmla: C_8H_5ClIN
Unit size 1g, 5g

6-Fluoro-4-iodo indole



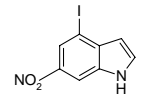
Catalog#: SL-01494
CAS: 885520-49-0
Mol Fmla: C_8H_5FIN
Unit size 0.1g, 1g, 10g

6-Amino-4-iodoindole



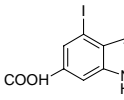
Catalog#: SL-01495
CAS: 885520-52-5
Mol Fmla: $C_8H_7IN_2$
Unit size 1g, 5g

4-Iodo-6-nitro indole



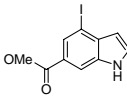
Catalog#: SL-01496
CAS: 885520-54-7
Mol Fmla: $C_8H_5IN_2O_2$
Unit size 1g, 5g

4-Iodo-6-indole carboxylic acid



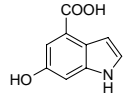
Catalog#: SL-01497
CAS: 724450-23-1
Mol Fmla: $C_9H_6INO_2$
Unit size 1g, 5g

4-Iodo-6-indole carboxylic acid methyl ester



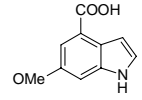
Catalog#: SL-01498
CAS: 597562-19-1
Mol Fmla: $C_{10}H_9INO_2$
Unit size 1g, 5g

6-Hydroxy-4-iodolecarboxylic acid



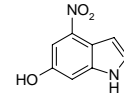
Catalog#: SL-01499
CAS: 885520-57-0
Mol Fmla: $C_9H_7NO_3$
Unit size 1g, 5g

6-Methoxy-4-iodolecarboxylic acid



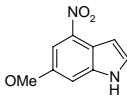
Catalog#: SL-01500
CAS: 885520-60-5
Mol Fmla: $C_{10}H_9NO_3$
Unit size 1g, 5g

6-Hydroxy-4-nitroindole



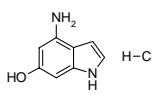
Catalog#: SL-01501
CAS: 885520-63-8
Mol Fmla: $C_8H_6N_2O_3$
Unit size 1g, 5g

6-Methoxy-4-nitroindole



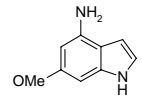
Catalog#: SL-01502
CAS: 885520-66-1
Mol Fmla: $C_9H_8N_2O_3$
Unit size 0.1g, 1g, 10g

4-Amino-6-hydroxyindole hydrochloride



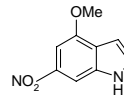
Catalog#: SL-01503
CAS: 1134321-85-9
Mol Fmla: $C_8H_8ClN_2O$
Unit size 1g, 5g

4-Amino-6-methoxyindole



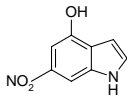
Catalog#: SL-01954
CAS: 282547-67-5
Mol Fmla: $C_9H_{10}N_2O$
Unit size 0.1g, 1g, 10g

4-Methoxy-6-nitroindole



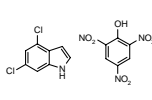
Catalog#: SL-01505
CAS: 175913-41-4
Mol Fmla: $C_9H_8N_2O_3$
Unit size 0.1g, 1g, 10g

4-Hydroxy-6-nitroindole



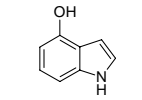
Catalog#: SL-01506
CAS: 885520-71-8
Mol Fmla: $C_8H_6N_2O_3$
Unit size 1g, 5g

4-6 Dichloroindole picrate



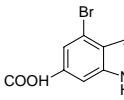
Catalog#: SL-01822
CAS: 106782-58-5
Mol Fmla: $C_{14}H_8Cl_2N_4O_7$
Unit size 1g, 5g

4-Hydroxyindole



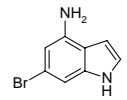
Catalog#: SL-00534
CAS: 2380-94-1
Mol Fmla: C_8H_7NO
Unit size

4-Bromo-6-indolecarboxylic acid



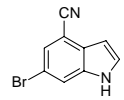
Catalog#: SL-00536
CAS: 374633-27-9
Mol Fmla: $C_9H_6BrNO_2$
Unit size 1g, 5g

4-Amino-6-bromoindole



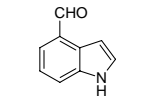
Catalog#: SL-00537
CAS: 350800-81-6
Mol Fmla: $C_8H_7BrN_2$
Unit size 1g, 10g, 50g

6-Bromo-4-cyanoindole



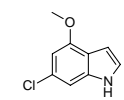
Catalog#: SL-00540
CAS: 374633-26-8
Mol Fmla: $C_8H_5BrN_2$
Unit size 1g, 5g

4-Indole-carboxaldehyde



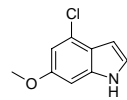
Catalog#: SL-00776
CAS: 1074-86-8
Mol Fmla: C_9H_7NO
Unit size Bulk

6-Chloro-4-methoxy indole



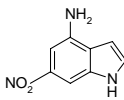
Catalog#: SL-01137
CAS: 117970-23-7
Mol Fmla: C_9H_8ClNO
Unit size 0.1g, 1g, 10g

4-Chloro-6-methoxy indole



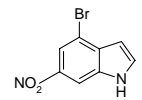
Catalog#: SL-01140
CAS: N/A
Mol Fmla: C_9H_8ClNO
Unit size 1g, 5g

4-Amino-6-nitro indole



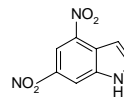
Catalog#: SL-01141
CAS: N/A
Mol Fmla: $C_8H_7N_3O_2$
Unit size 1g, 5g

4-Bromo-6-nitro indole



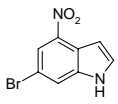
Catalog#: SL-01143
CAS: N/A
Mol Fmla: $C_8H_5BrN_2O_2$
Unit size 1g, 5g

4,6-Dinitro indole



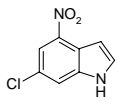
Catalog#: SL-01144
CAS: 245524-93-0
Mol Fmla: $C_8H_5N_3O_4$
Unit size 1g, 5g

6-Bromo-4-nitro indole



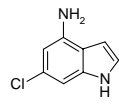
Catalog#: SL-01145
CAS: N/A
Mol Fmla: $C_8H_5BrN_2O_2$
Unit size 1g, 5g

6-Chloro-4-nitro indole



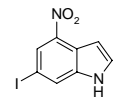
Catalog#: SL-01146
CAS: 245524-95-2
Mol Fmla: $C_8H_5ClN_2O_2$
Unit size 1g, 5g

4-Amino-6-chloro indole



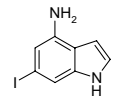
Catalog#: SL-01147
CAS: 431046-15-0
Mol Fmla: $C_8H_7ClN_2$
Unit size 1g, 5g

6-Iodo-4-nitro indole



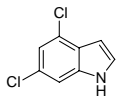
Catalog#: SL-01149
CAS: N/A
Mol Fmla: $C_8H_5IN_2O_2$
Unit size 1g, 5g

4-Amino-6-iodo indole



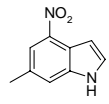
Catalog#: SL-01150
CAS: N/A
Mol Fmla: $C_8H_7IN_2$
Unit size 1g, 5g

4,6-Dichloro indole



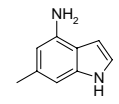
Catalog#: SL-01151
CAS: 101495-18-5
Mol Fmla: $C_8H_5Cl_2N$
Unit size 1g, 5g, 25g

6-Methyl-4-nitro indole



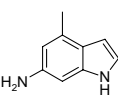
Catalog#: SL-01167
CAS: N/A
Mol Fmla: $C_9H_8N_2O_2$
Unit size 1g, 5g

4-Amino-6-methyl indole



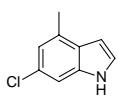
Catalog#: SL-01168
CAS: N/A
Mol Fmla: $C_9H_{10}N_2$
Unit size 0.1g, 1g, 10g

6-Amino-4-methyl indole



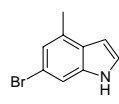
Catalog#: SL-01169
CAS: 139121-40-7
Mol Fmla: $C_9H_{10}N_2$
Unit size 1g, 5g

6-Chloro-4-methyl indole



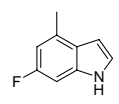
Catalog#: SL-01170
CAS: N/A
Mol Fmla: C_9H_8ClN
Unit size 1g, 5g, 25g

6-Bromo-4-methyl indole



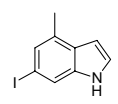
Catalog#: SL-01174
CAS: 885520-51-4
Mol Fmla: C_9H_8BrN
Unit size 1g, 5g, 25g

6-Fluoro-4-methyl indole



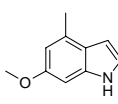
Catalog#: SL-01178
CAS: 885521-06-2
Mol Fmla: C_9H_8FN
Unit size 0.1g, 1g, 10g

6-Iodo-4-methyl indole



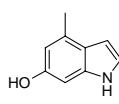
Catalog#: SL-01182
CAS: 885521-15-3
Mol Fmla: C_9H_8IN
Unit size 1g, 5g

6-Methoxy-4-methyl indole



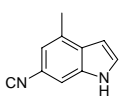
Catalog#: SL-01186
CAS: 885521-27-7
Mol Fmla: $C_{10}H_{11}NO$
Unit size 1g, 5g

6-Hydroxy-4-methyl indole



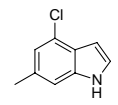
Catalog#: SL-01187
CAS: 885521-30-2
Mol Fmla: C_9H_9NO
Unit size 1g, 5g

6-Cyano-4-methyl indole



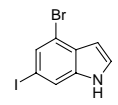
Catalog#: SL-01198
CAS: 3613-02-3
Mol Fmla: $C_{10}H_8N_2$
Unit size 1g, 5g

4-Chloro-6-methyl indole



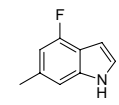
Catalog#: SL-01205
CAS: 885521-78-8
Mol Fmla: C_9H_8ClN
Unit size 1g, 5g

4-Bromo-6-iodo indole



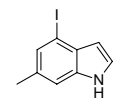
Catalog#: SL-01211
CAS: 850334-30-4
Mol Fmla: C_8H_5BrIN
Unit size 1g, 5g

4-Fluoro-6-methyl indole



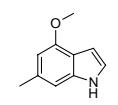
Catalog#: SL-01215
CAS: 885522-13-4
Mol Fmla: C_9H_8FN
Unit size 1g, 5g

4-Iodo-6-methyl indole



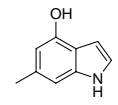
Catalog#: SL-01220
CAS: 885522-28-1
Mol Fmla: C_9H_8IN
Unit size 1g, 5g

4-Methoxy-6-methyl indole



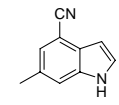
Catalog#: SL-01227
CAS: 885522-46-3
Mol Fmla: $C_{10}H_{11}NO$
Unit size 0.1g, 1g, 10g

4-Hydroxy-6-methyl indole



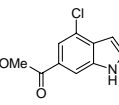
Catalog#: SL-01229
CAS: 61545-41-3
Mol Fmla: C_9H_9NO
Unit size 1g, 5g

4-Cyano-6-methyl indole



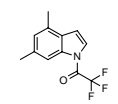
Catalog#: SL-01232
CAS: 885522-54-3
Mol Fmla: $C_{10}H_8N_2$
Unit size 1g, 5g

4-Chloro-6-indolecarboxylic acid methyl ester



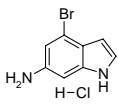
Catalog#: SL-01249
CAS: 885522-78-1
Mol Fmla: $C_{10}H_8ClNO_2$
Unit size 1g, 5g

4,6-Dimethyl-1-trifluoroacetyl indole



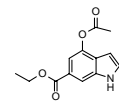
Catalog#: SL-01938
CAS: 75934-42-8
Mol Fmla: $C_{12}H_{10}F_3NO$
Unit size 5g, 50g

4-Bromo-6-amino indole hydrochloride



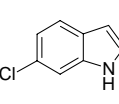
Catalog#: SL-01941
CAS: 1134753-48-2
Mol Fmla: $C_8H_8BrClN_2$
Unit size 1g, 5g

4-Acetoxy-6-indole carboxylic acid ethyl ester



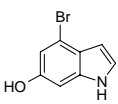
Catalog#: SL-01942
CAS: 885523-81-9
Mol Fmla: $C_{13}H_{13}NO_4$
Unit size 1g, 5g

6-Chloroindole



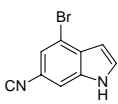
Catalog#: SL-01943
CAS: 17422-33-2
Mol Fmla: C_8H_6ClN
Unit size 5g, Bulk

4-Bromo-6-hydroxyindole



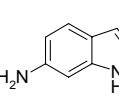
Catalog#: SL-01945
CAS: 374633-28-0
Mol Fmla: C_8H_6BrNO
Unit size 1g, 5g

4-Bromo-6-cyanoindole



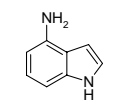
Catalog#: SL-01960
CAS: 374633-29-1
Mol Fmla: $C_8H_5BrN_2$
Unit size 1g, 5g

6-Aminoindole



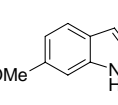
Catalog#: SL-02064
CAS: 5318-27-4
Mol Fmla: $C_8H_8N_2$
Unit size Bulk

4-Aminoindole



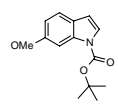
Catalog#: SL-02065
CAS: 5192-23-4
Mol Fmla: $C_8H_8N_2$
Unit size 1g, 5g

6-Methoxyindole



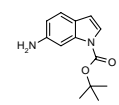
Catalog#: SL-02072
CAS: 3189-13-7
Mol Fmla: C_9H_9NO
Unit size 5g

1-Boc-6-methoxyindole



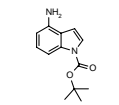
Catalog#: SL-02073
CAS: 138334-18-0
Mol Fmla: $C_{14}H_{17}NO_3$
Unit size 0.5g, 5g

1-Boc-6-aminoindole



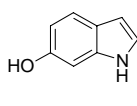
Catalog#: SL-02075
CAS: 219508-62-0
Mol Fmla: $C_{13}H_{16}N_2O_2$
Unit size 0.5g, 5g

1-Boc-4-aminoindole



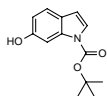
Catalog#: SL-02076
CAS: N/A
Mol Fmla: $C_{13}H_{16}N_2O_2$
Unit size 0.5g, 5g

6-Hydroxyindole



Catalog#: SL-02118
CAS: 2380-86-1
Mol Fmla: C_8H_7NO
Unit size 1g
5a

N-Boc-6-hydroxyindole



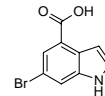
Catalog#: SL-02121
CAS: 898746-82-2
Mol Fmla: $C_{13}H_{15}NO_3$
Unit size 1g
5a

N-Boc-4-hydroxyindole



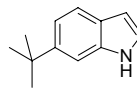
Catalog#: SL-02122
CAS: 879093-22-8
Mol Fmla: $C_{13}H_{15}NO_3$
Unit size 1g
5a

6-Bromo-4-indole carboxylic acid



Catalog#: SL-02136
CAS: 898746-91-3
Mol Fmla: $C_9H_6BrNO_2$
Unit size 1g
10a

6-tert-Butylindole



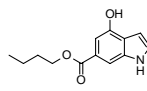
Catalog#: SL-02143
CAS: 887581-54-6
Mol Fmla: $C_{12}H_{15}N$
Unit size 0.1g, 1g, 10g

4-Methoxyindole



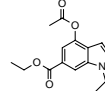
Catalog#: SL-02155
CAS: 4837-90-5
Mol Fmla: C_9H_9NO
Unit size 1g
5a

4-Hydroxy-6-indole carboxylic acid butyl ester



Catalog#: SL-02162
CAS: N/A
Mol Fmla: $C_{13}H_{15}NO_3$
Unit size 1g
5a

N-Acetyl-4-acetoxy-6-ethylindole carboxylate



Catalog#: SL-02163
CAS: N/A
Mol Fmla: $C_{15}H_{15}NO_5$
Unit size 1g
5a

4-Benzyloxy-6-methyl indole



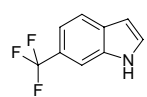
Catalog#: SL-02633
CAS: 840537-99-7
Mol Fmla: $C_{16}H_{15}NO$
Unit size 0.1g, 1g, 10g

4-Bromoindole



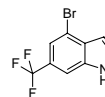
Catalog#: SL-02674
CAS: 10075-50-0
Mol Fmla: C_8H_6BrN
Unit size 0.1g, 1g, 10g

6-(Trifluoromethyl)indole



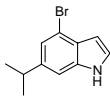
Catalog#: SL-02677
CAS: 13544-43-9
Mol Fmla: $C_9H_6F_3N$
Unit size 1g
5a

6-(Trifluoromethyl)-4-bromo indole



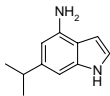
Catalog#: SL-02681
CAS: 1000342-93-7
Mol Fmla: $C_9H_5BrF_3N$
Unit size 0.1g, 1g, 10g

4-Bromo-6-isopropylindole



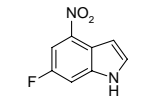
Catalog#: SL-02748
CAS: 1000343-72-5
Mol Fmla: $C_{11}H_{14}BrN$
Unit size 1g
5a

4-Amino-6-isopropylindole



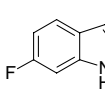
Catalog#: SL-02751
CAS: 1000343-80-5
Mol Fmla: $C_{11}H_{14}N_2$
Unit size 1g
5a

6-Fluoro-4-nitroindole



Catalog#: SL-02824
CAS: 1000340-83-9
Mol Fmla: $C_8H_5FN_2O_2$
Unit size 0.1g, 1g, 10g

6-Fluoroindole



Catalog#: SL-02833
CAS: 399-51-9
Mol Fmla: C_8H_6FN
Unit size 1g
5a

4-Indole carboxylic acid
Indole-4-carboxylic acid

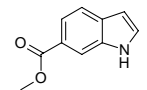
Catalog#: SL-02869
CAS: 2124-55-2
Mol Fmla: $C_9H_7NO_2$
Unit size 1g
5a

4-Methylindole



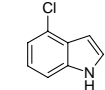
Catalog#: SL-02969
CAS: 16096-32-5
Mol Fmla: C_9H_9N
Unit size 1g
5a

Methyl indole-6-carboxylate



Catalog#: SL-02976
CAS: 50820-65-0
Mol Fmla: $C_{10}H_9NO_2$
Unit size 5g
Bulk

4-Chloroindole



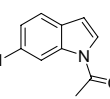
Catalog#: SL-02984
CAS: 25235-85-2
Mol Fmla: C_8H_6ClN
Unit size 1g
5a

4-Fluoroindole



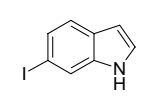
Catalog#: SL-02985
CAS: 387-43-9
Mol Fmla: C_8H_6FN
Unit size 1g
5a

1-Acetyl-6-iodoindole



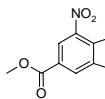
Catalog#: SL-03126
CAS: 1000342-92-6
Mol Fmla: $C_{10}H_9INO$
Unit size 1g
5a

6-Iodoindole



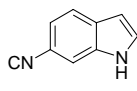
Catalog#: SL-03128
CAS: 115666-47-2
Mol Fmla: C_8H_6IN
Unit size 0.25g
5a

4-Nitro-6-indolecarboxylic acid methyl ester



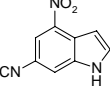
Catalog#: SL-03175
CAS: 1000343-62-3
Mol Fmla: $C_{10}H_9N_2O_4$
Unit size 1g
5a

6-Cyanoindole



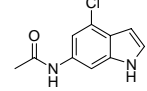
Catalog#: SL-03485
CAS: 15861-36-6
Mol Fmla: $C_8H_6N_2$
Unit size 1g
5a

6-Cyano-4-nitro indole



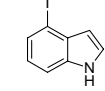
Catalog#: SL-03486
CAS: N/A
Mol Fmla: $C_9H_5N_3O_2$
Unit size 1g
5a

6-Acetylamino-4-chloro indole



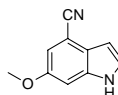
Catalog#: SL-03527
CAS: N/A
Mol Fmla: $C_{10}H_9ClN_2O$
Unit size 1g
5a

4-Iodo indole



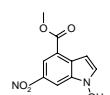
Catalog#: SL-03530
CAS: 81038-38-2
Mol Fmla: C_8H_6IN
Unit size 1g
5a

4-Cyano-6-methoxy (1H)indole



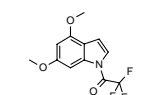
Catalog#: SL-03532
CAS: N/A
Mol Fmla: $C_{10}H_8N_2O$
Unit size 0.1g, 1g, 10g

1-Hydroxy-6-nitro indole-4-methylcarboxylate



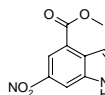
Catalog#: SL-03622
CAS: N/A
Mol Fmla: $C_{10}H_8N_2O_5$
Unit size 0.25g
1a

4,6-Dimethoxy-1-trifluoroacetyl indole



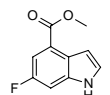
Catalog#: SL-03624
CAS: N/A
Mol Fmla: $C_{12}H_{10}F_3NO_3$
Unit size 1g
5a

6-Nitro indole-4-methylcarboxylate



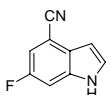
Catalog#: SL-03717
CAS: N/A
Mol Fmla: $C_{10}H_8N_2O_4$
Unit size 0.1g
1a

6-Fluoro indole-4-methylcarboxylate



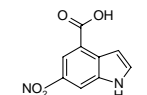
Catalog#: SL-03718
CAS: N/A
Mol Fmla: $C_{10}H_8FNO_2$
Unit size 0.1g
1a

4-Cyano-6-fluoro indole



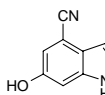
Catalog#: SL-03719
CAS: N/A
Mol Fmla: $C_9H_5FN_2$
Unit size 0.1g
1a

6-Nitro indole-4-methylcarboxylic acid



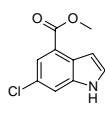
Catalog#: SL-03732
CAS: N/A
Mol Fmla: $C_9H_6N_2O_4$
Unit size 0.25g
1a

4-Cyano-6-hydroxy (1H)indole



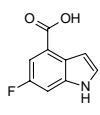
Catalog#: SL-03734
CAS: N/A
Mol Fmla: $C_9H_6N_2O$
Unit size 0.1g, 1g, 10g

6-Chloro indole-4-methylcarboxylate



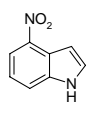
Catalog#: SL-03741
CAS: N/A
Mol Fmla: $C_{10}H_8ClNO_2$
Unitsize 0.25g
1a

6-Fluoro indole-4-methylcarboxylic acid



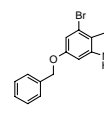
Catalog#: SL-03742
CAS: 908600-71-5
Mol Fmla: $C_9H_6FNO_2$
Unitsize 0.25g
1a

4-Nitroindole



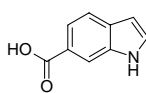
Catalog#: SL-03784
CAS: 4769-97-5
Mol Fmla: $C_8H_6N_2O_2$
Unitsize 100g, bulk

4-Bromo-6-benzyloxyindole



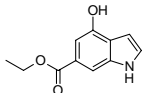
Catalog#: SL-03805
CAS: N/A
Mol Fmla: $C_{15}H_{12}BrNO$
Unitsize 1g, 5g, 10g

6-indolecarboxylic acid



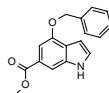
Catalog#: SL-03877
CAS: 1670-82-2
Mol Fmla: $C_9H_7NO_2$
Unitsize 1g, 100g

4-Hydroxy-6-indole carboxylic acid ethyl ester



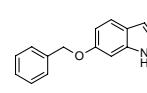
Catalog#: SL-03958
CAS: N/A
Mol Fmla: $C_{11}H_{11}NO_3$
Unitsize 1g, 5g

4-Benzloxy-6-indole carboxylic acid methyl ester



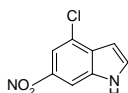
Catalog#: SL-03972
CAS: 61545-36-6
Mol Fmla: $C_{17}H_{15}NO_3$
Unitsize 1g, 5g

6-Benzloxy-indole



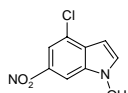
Catalog#: SL-03992
CAS: 15903-94-3
Mol Fmla: $C_{15}H_{13}NO$
Unitsize 1g, 5g

4-Chloro-6-nitroindole



Catalog#: SL-04085
CAS: 245524-94-1
Mol Fmla: $C_8H_5ClN_2O_2$
Unitsize 1g, 5g

4-Chloro-1-hydroxy-6-nitroindole



Catalog#: SL-04160
CAS: N/A
Mol Fmla: $C_8H_5ClN_2O_3$
Unitsize 1g, 5g

4-Fluoro-1-benzosulfonyl-1H-indole



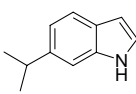
Catalog#: SL-04271
CAS: 102855-23-2
Mol Fmla: $C_{14}H_{10}FNO_2S$
Unitsize 1g
5a

4-Benzyloxy-6-Fluoro 1H-indole



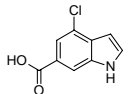
Catalog#: SL-04315
CAS: 312314-26-4
Mol Fmla: $C_{15}H_{12}FNO$
Unitsize 1g
5a

6-Isopropyl indole



Catalog#: SL-04345
CAS: N/A
Mol Fmla: $C_{11}H_{13}N$
Unitsize 1g
10a

4-Chloro-6-indole carboxylic acid



Catalog#: SL-01486
CAS: N/A
Mol Fmla: $C_9H_6ClNO_2$
Unitsize 1g
5a