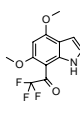
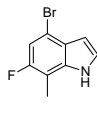


4,6-Dimethoxy-7-trifluoroacetyl indole



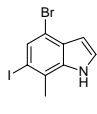
Catalog#: SL-03641
CAS: N/A
Mol Fmla: $C_{12}H_{10}F_3NO_3$
Unitsize 0.25g
5a

4-Bromo-6-fluoro-7-methylindole



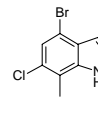
Catalog#: SL-03806
CAS: N/A
Mol Fmla: C_9H_7BrFN
Unitsize 1g, 5g, 10g

4-Bromo-6-iodo-7-methylindole



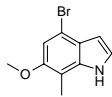
Catalog#: SL-03807
CAS: N/A
Mol Fmla: C_9H_7BrIN
Unitsize 1g, 5g, 10g

4-Bromo-6-chloro-7-methylindole



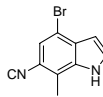
Catalog#: SL-03808
CAS: N/A
Mol Fmla: C_9H_7BrClN
Unitsize 1g, 5g, 10g

4-Bromo-6-methoxy-7-methylindole



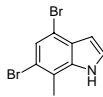
Catalog#: SL-03809
CAS: N/A
Mol Fmla: $C_{10}H_{10}BrNO$
Unitsize 1g, 5g, 10g

4-Bromo-6-cyano-7-methylindole



Catalog#: SL-03811
CAS: N/A
Mol Fmla: $C_{10}H_7BrN_2$
Unitsize 1g, 5g, 10g

4-Bromo-6-bromo-7-methylindole



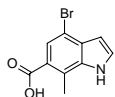
Catalog#: SL-03812
CAS: N/A
Mol Fmla: $C_9H_7Br_2N$
Unitsize 1g, 5g, 10g

6-Bromo-4-flouro-7-methyl indole



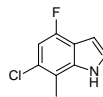
Catalog#: SL-03955
CAS: N/A
Mol Fmla: C_9H_7BrFN
Unitsize 0.1g
1a

4-Bromo-7-methyl-indole-6-carboxylic acid



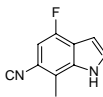
Catalog#: SL-03979
CAS: N/A
Mol Fmla: $C_{10}H_8BrNO_2$
Unitsize 0.1g
1a

6-Chloro-4-flouro-7-methyl indole



Catalog#: SL-03989
CAS: N/A
Mol Fmla: C_9H_7ClFN
Unitsize 1g, 5g

6-Cyano-4-flouro-7-methyl indole



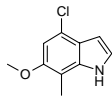
Catalog#: SL-03990
CAS: N/A
Mol Fmla: $C_{10}H_7FN_2$
Unitsize 0.1g
1a

4-Flouro-6-methoxy-7-methyl indole



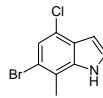
Catalog#: SL-03991
CAS: N/A
Mol Fmla: $C_{10}H_{10}FNO$
Unitsize 0.1g
1a

4-Chloro-6-methoxy-6-methyl indole



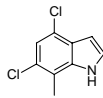
Catalog#: SL-04091
CAS: N/A
Mol Fmla: $C_{10}H_{10}ClNO$
Unitsize 0.1g
1a

6-Bromo-4-chloro-7-methyl indole



Catalog#: SL-04093
CAS: N/A
Mol Fmla: C_9H_7BrClN
Unitsize 0.1g
1a

4,6-Dichloro-7-methyl indole



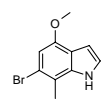
Catalog#: SL-04095
CAS: N/A
Mol Fmla: $C_9H_7Cl_2N$
Unitsize 0.1g
1a

6-Chloro-4-methoxy-7-methylindole



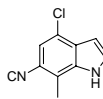
Catalog#: SL-04163
CAS: N/A
Mol Fmla: $C_{10}H_{10}ClNO$
Unitsize 1g, 5g

6-Bromo-4-methoxy-7-methylindole



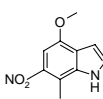
Catalog#: SL-04164
CAS: N/A
Mol Fmla: $C_{10}H_{10}BrNO$
Unitsize 1g, 5g

4-Chloro-6-cyano-7-methyl-1H-indole



Catalog#: SL-04264
CAS: N/A
Mol Fmla: $C_{10}H_7ClN_2$
Unitsize 1g
5a

7-Methyl-4-methoxy-6-nitro 1H-indole



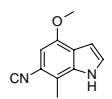
Catalog#: SL-04278
CAS: N/A
Mol Fmla: $C_{10}H_{10}N_2O_3$
Unitsize 1g
5a

4,6-Difluoro-7-methyl 1H-indole



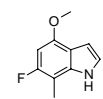
Catalog#: SL-04279
CAS: N/A
Mol Fmla: $C_9H_7F_2N$
Unitsize 1g
5a

6-Cano-4-methoxy-7-methyl 1H-indole



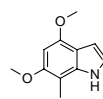
Catalog#: SL-04281
CAS: N/A
Mol Fmla: $C_{11}H_{10}N_2O$
Unitsize 1g
5a

6-Flouro-4-methoxy-7-methyl 1H-indole



Catalog#: SL-04285
CAS: N/A
Mol Fmla: $C_{10}H_{10}FNO$
Unitsize 1g
5a

4,6-Dimethoxy-7-methyl 1H-indole



Catalog#: SL-04286
CAS: N/A
Mol Fmla: $C_{11}H_{13}NO_2$
Unitsize 1g
5a