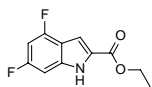
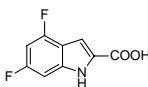


4,6-Difluoroindole-2-ethyl carboxylate



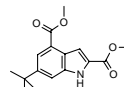
Catalog#: SL-00202  
CAS: 870536-93-9  
Mol Fmla:  $C_{11}H_9F_2NO_2$   
Unitsize 1g, 5g

4,6-Difluoroindole-2-carboxylic acid



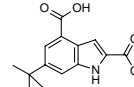
Catalog#: SL-00203  
CAS: 247564-65-5  
Mol Fmla:  $C_9H_5F_2NO_2$   
Unitsize 1g, 5g

6-tert-Butylindole-2,4-dicarboxylic methyl ester



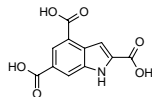
Catalog#: SL-03344  
CAS: 1000341-44-5  
Mol Fmla:  $C_{16}H_{19}NO_4$   
Unitsize 0.1g, 1g, 10g

6-tert-Butylindole-2,4-dicarboxylic acid



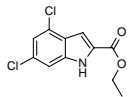
Catalog#: SL-03345  
CAS: 1000341-47-8  
Mol Fmla:  $C_{14}H_{15}NO_4$   
Unitsize 0.1g, 1g, 10g

Indole-2,4,6-tricarboxylic acid



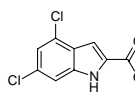
Catalog#: SL-03346  
CAS: 1000341-50-3  
Mol Fmla:  $C_{11}H_7NO_6$   
Unitsize 1g, 5g

4,6-Dichloroindole-2-carboxylic acid ethyl ester



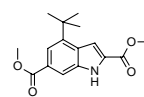
Catalog#: SL-03563  
CAS: 53995-82-7  
Mol Fmla:  $C_{11}H_9Cl_2NO_2$   
Unitsize 1g, 5g

4,6-Dichloroindole-2-carboxylic acid



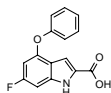
Catalog#: SL-03564  
CAS: 101861-63-6  
Mol Fmla:  $C_9H_5Cl_2NO_2$   
Unitsize 1g, 5g

4-t-Butylindole-2,6-dicarboxylic acid-2-ethyl-6-methyl ester



Catalog#: SL-03855  
CAS: N/A  
Mol Fmla:  $C_{17}H_{21}NO_4$   
Unitsize 1g, 5g, 10g

6-Fluoro-4-(phenylmethoxy)-1H-Indole-2-carboxylic acid



Catalog#: SL-04211  
CAS: 312314-24-2  
Mol Fmla:  $C_{15}H_{10}FNO_3$   
Unitsize 1g, 5g