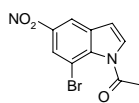
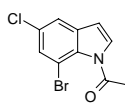


1-Acetyl-7-bromo-5-nitroindole



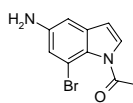
Catalog#: SL-03140
 CAS: 1000343-23-6
 Mol Fmla: $C_{10}H_7BrN_2O_3$
 Unitsize 1g
 5a

1-Acetyl-7-bromo-5-chloroindole



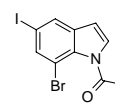
Catalog#: SL-03145
 CAS: 1000343-26-9
 Mol Fmla: $C_{10}H_7BrClNO$
 Unitsize 1g
 5a

1-Acetyl-5-amino-7-bromoindole



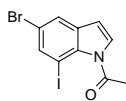
Catalog#: SL-03147
 CAS: 1000343-32-7
 Mol Fmla: $C_{10}H_9BrN_2O$
 Unitsize 1g
 5a

1-Acetyl-7-bromo-5-iodoindole



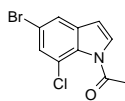
Catalog#: SL-03151
 CAS: 1000343-35-0
 Mol Fmla: $C_{10}H_7BrINO$
 Unitsize 1g
 5a

1-Acetyl-5-bromo-7-iodoindole



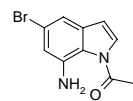
Catalog#: SL-03154
 CAS: 1000343-41-8
 Mol Fmla: $C_{10}H_7BrINO$
 Unitsize 1g
 5a

1-Acetyl-5-bromo-7-chloroindole



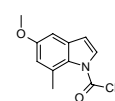
Catalog#: SL-03157
 CAS: 1000343-44-1
 Mol Fmla: $C_{10}H_7BrClNO$
 Unitsize 1g
 5a

1-Acetyl-7-amino-5-bromoindole



Catalog#: SL-03161
 CAS: 1000343-47-4
 Mol Fmla: $C_{10}H_9BrN_2O$
 Unitsize 1g
 5a

1-Trifluoroacetyl-5-methoxy-7-methyl indole



Catalog#: SL-03503
 CAS: N/A
 Mol Fmla: $C_{12}H_{13}NO_2$
 Unitsize 1g
 5a